

HGP Open Part Number	Schematic Drawing #	Approx Weight (LBS)
HGP0015BW0S0000	30209-S	109
HGP0015BW0C0000	30209	114
HGP0015BW0C1000	30209-PQ	115

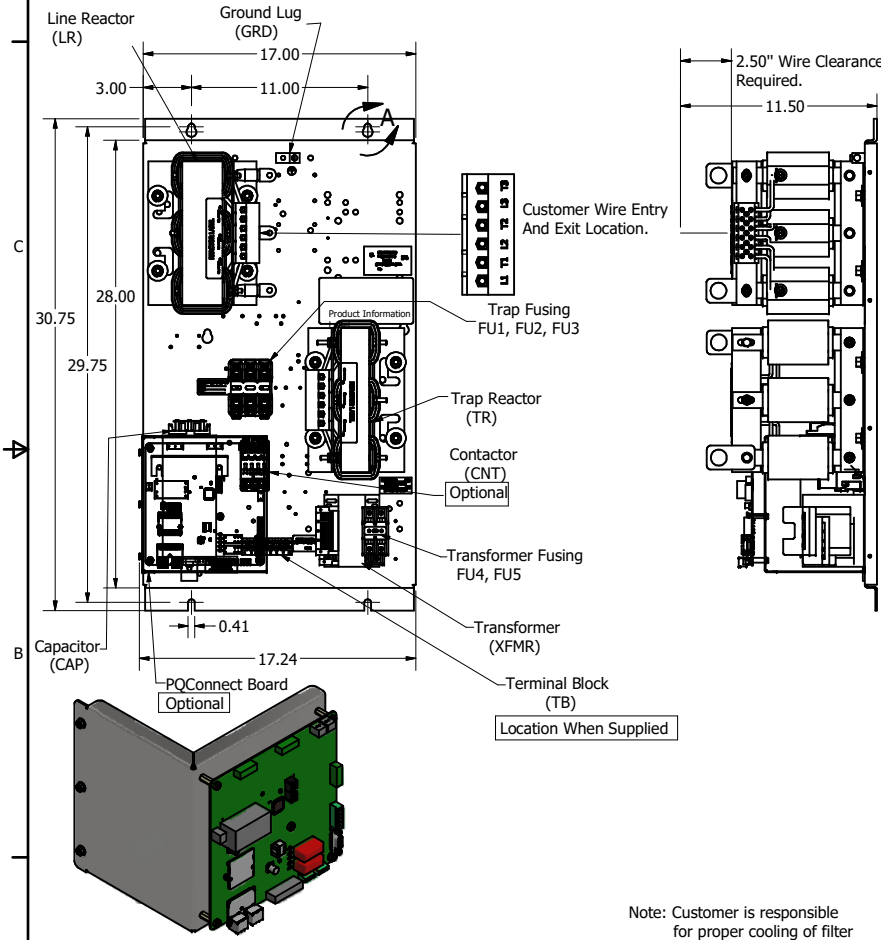
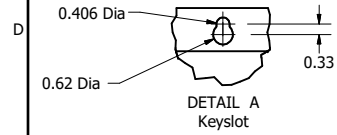
HGP Part Number	HorsePower (HP)	kVar	Maximum Amps (A)	Harmonic	Voltage (V)	Hz.	Phase
HGP0015BW----	15	15	42	5th	240	60	3

HGP Type 1 Part Number	Schematic Drawing #	Approx Weight (LBS)
HGP0015BWW1S0000	30209-S	147
HGP0015BW1C0000	30209	152
HGP0015BW1C1000	30209-PQ	153

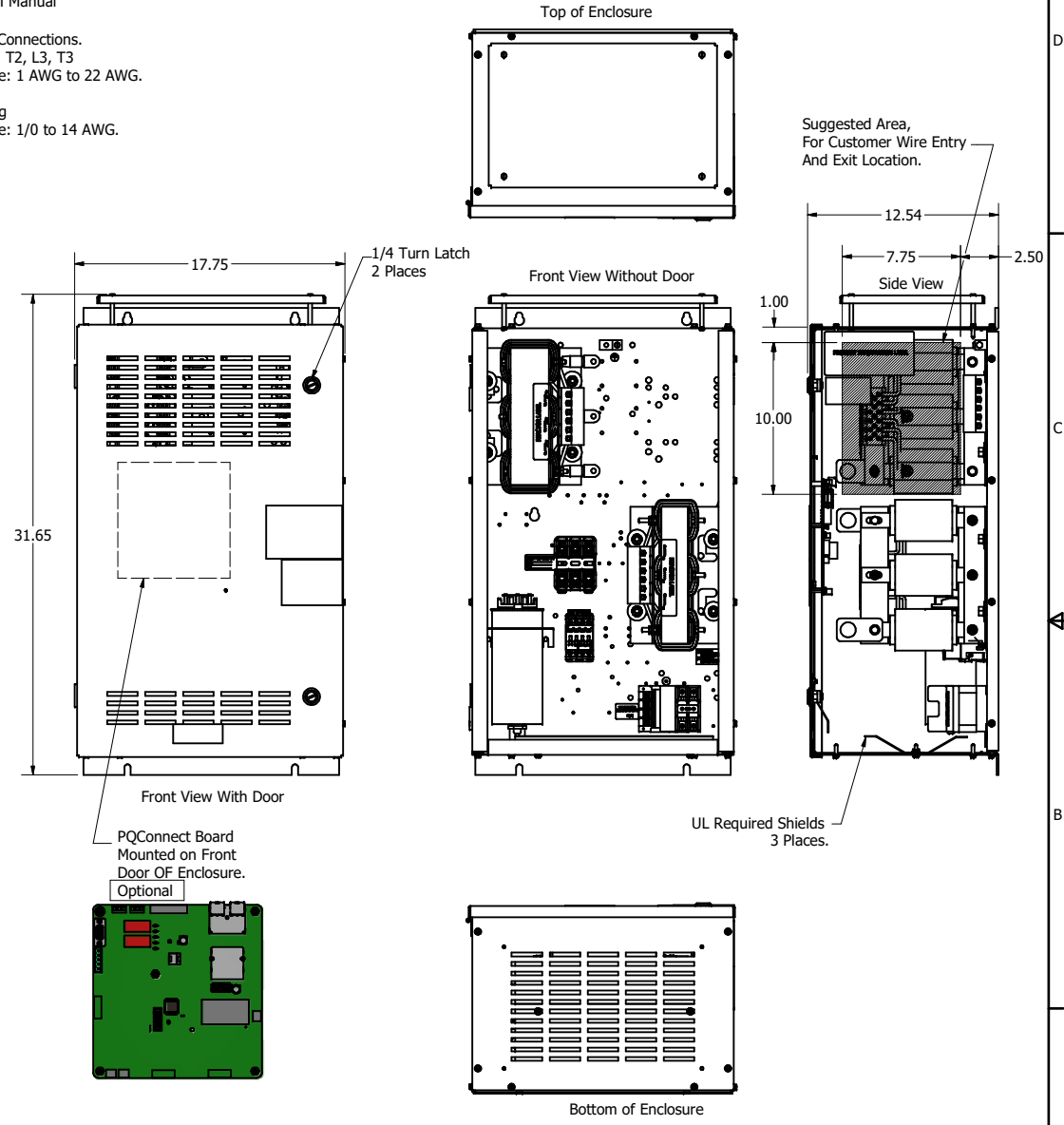
Note: For Torque Information
See IOM Manual

Customer Connections.
L1, T1, L2, T2, L3, T3
Wire Range: 1 AWG to 22 AWG.

Ground Lug
Wire Range: 1/0 to 14 AWG.



Note: Customer is responsible for proper cooling of filter components on open panels.
Capacitors Maximum Ambient 50°C.



Components	HGP0015BW----		
	0S0000/1S0000	0C0000/1C0000	0C1000/1C1000
Line Reactor (LR)	X	X	X
Trap Reactor (TR)	X	X	X
Capacitor (Cap)	X	X	X
Trap Fusing, FU1, FU2, FU3	X	X	X
Contactor (CNT)		X	X
Transformer (XFMR)		X	X
XFMR Fusing, FU4, FU5		X	X
PQConnect Board			X

THE INFORMATION AND DESIGNS CONTAINED IN THIS DRAWING ARE CONFIDENTIAL AND THE PROPRIETARY PROPERTY OF ALLIED MOTION TECHNOLOGIES INC. AND ITS SUBSIDIARIES. NEITHER THIS DESIGN NOR ANY INFORMATION CONTAINED IN THIS DRAWING MAY BE REPRODUCED OR DISCLOSED TO OTHERS WITHOUT THE EXPRESS WRITTEN CONSENT OF ALLIED MOTION TECHNOLOGIES INC. AND ITS SUBSIDIARIES.

REV	DESCRIPTION	DATE	BY
B	Convert drawing to Inventor	6/27/2023	DSW
A	As Built	2/10/2017	JRN
NO	REVISION	DATE	BY

TOLERANCES (EXCEPT AS NOTED)
DECIMAL
.XX ± .25
.XXX ± .10
FRACTIONAL
± 1/32
ANGULAR
± 1°

Material(s) Shall be RoHS Compliant

W182N10611 (Rev 1) 15Feb
Germantown, WI 53022
© 2021 TCI, LLC

Harmonic Guard Passive
HGP, 15HP, 240/3/60, Open and Type 1.

DATE: 2/10/2017
REV: 106918DG
SCALE: 1/8
SHEET 1 OF 1

Customer Is Responsible For Installation to Meet All National And Local Electrical Codes.